

**TRIPLE**  
POWER

# TSYS-HS51

Storage & Battery Product Team



# TSYS-HS5

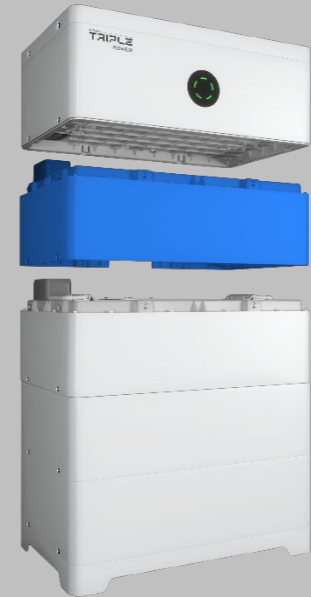
FLEXIBLE & SIMPLE



Easy and fast  
Connection



10.2~66.5  
kWh



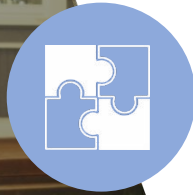
Flexible capacity  
expansion



Capable of working at extreme low temperature



Modular design for easy and fast installation



Wide-range applications including on-grid, off-grid, back up



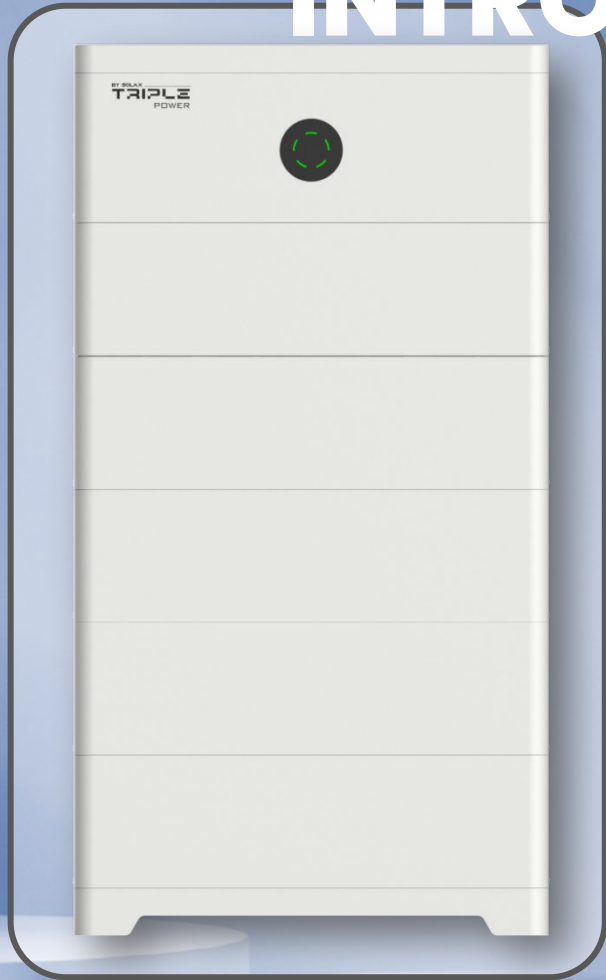
Lithium Phosphate Battery : Safe & Reliable

# TSYS-HS5

1



# PRODUCT INTRODUCTION



General battery system

**T-SYS-H-S-51**

51: 5.1kWh

S: Stackable  
R: Rack  
D: Detached

H: High voltage  
L: Low voltage

SYS: Battery system

T: triple power

# PRODUCT INTRODUCTION



Sub battery system

**T-H-S-10.2**

10.2: 10.2kWh

S: Stackable  
R: Rack  
D: Detached

H: High voltage  
L: Low voltage

T: triple power

**Note:** The battery system is composed of 2 to 13 models, just take the parameter of 2 models as an example.

# PRODUCT INTRODUCTION

Battery management system



**TBMS-S-51-8**

8: Support 800V voltage  
10: Support 1000V voltage

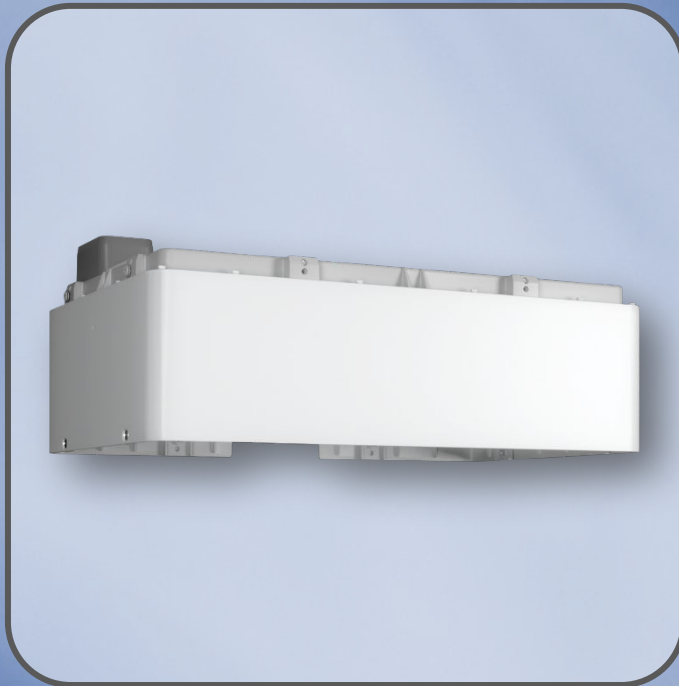
51: 5.1kWh

S: Stackable  
R: Rack  
D: Detached

TBMS: Triple series battery management system

# PRODUCT INTRODUCTION

Battery module



**T-B-H-S-51**

51: 5.1kWh

S: Stackable  
R: Rack  
D: Detached

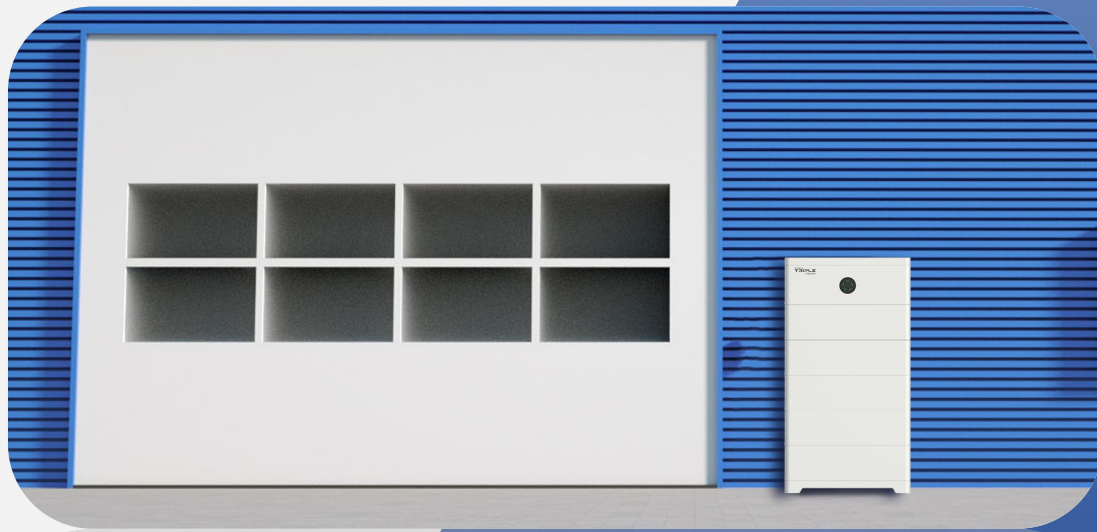
H: High voltage  
L: Low voltage

B: Battery

T: triple power

# KEY FEATURE

## TSYS-HS51



### High-performance

- Max. 70A continuous charging and discharging current, ensuring optimal performance.
- Cutting-edge battery technology, which is capable to work from -30°C to 53°C.

### Safe and reliable

- IP66 rating, which is highly reliable against dust and water and suitable for various environments.
- Reliable integrated LFP cells, offering over 6000 charge cycles for over 10 years safe operation.

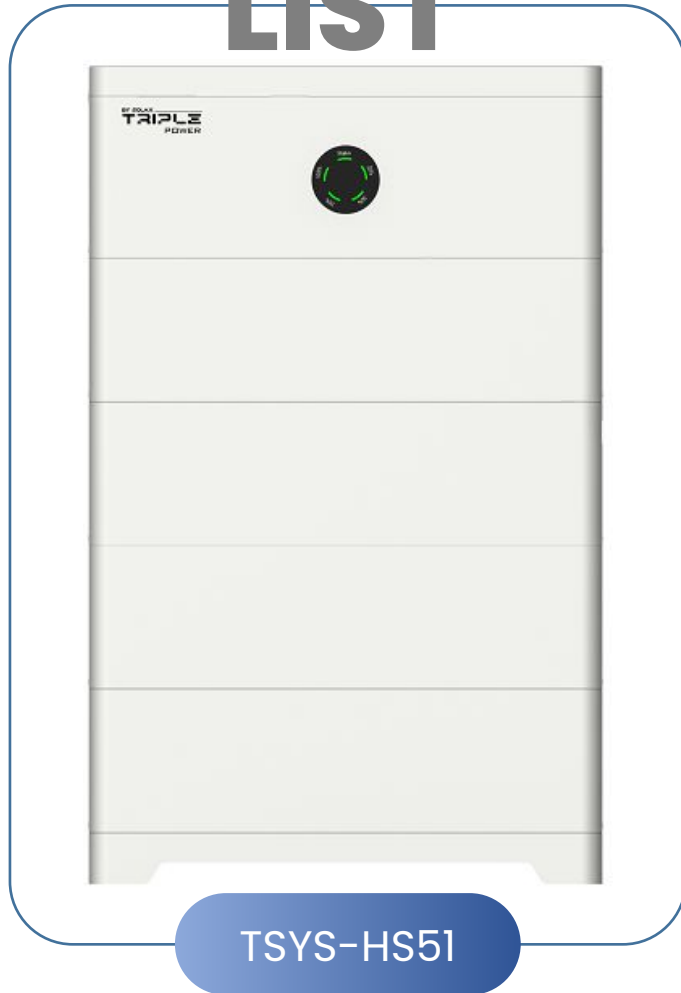
### Flexibility

- Wide capacity range of 10.2 kWh to 40.9 kWh for single-phase inverter and 15.3 kWh to 66.5 kWh for three-phase inverter..
- The capacity can be expanded as needed, providing flexible compatibility with different inverters to adapt to various energy storage requirements.

### Easy installation

- Compact and stackable design enable quick and easy installation.
- Modular design for plug and play.
- Remote monitoring, diagnosis and update via inverter.

# MODEL LIST



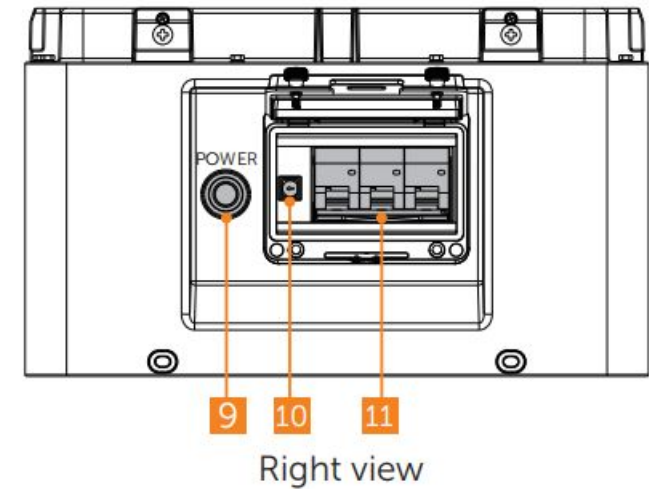
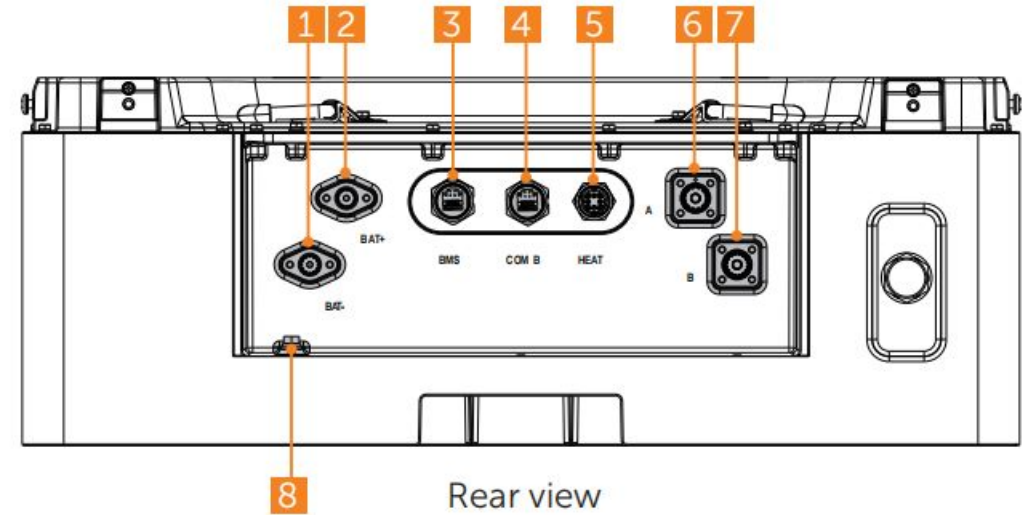
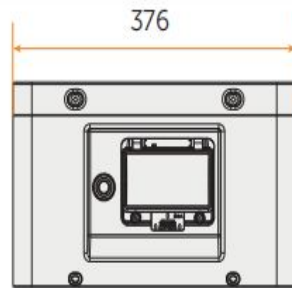
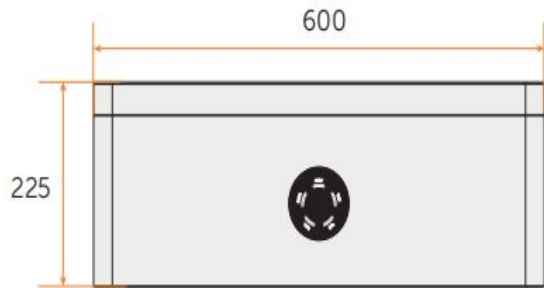
Battery module No.	Battery model
2	T-HS10.2
3	T-HS15.3
4	T-HS20.4
5	T-HS25.6
6	T-HS30.7
7	T-HS35.8
8	T-HS40.9
9	T-HS46.0
10	T-HS51.2
11	T-HS56.3
12	T-HS61.4
13	T-HS66.

# BM S

## Main Control

### System Information

product name	:	TBMS-S51-8
Operating Voltage	:	85V-750 V
Max. Current	:	70 A
Weight	:	18.5kg
Dimensions	:	600mm * 376mm * 225mm
Ingress Protection	:	IP66
Operating Temperature	:	-30°C-70°C
Cooling Type	:	natural cooling



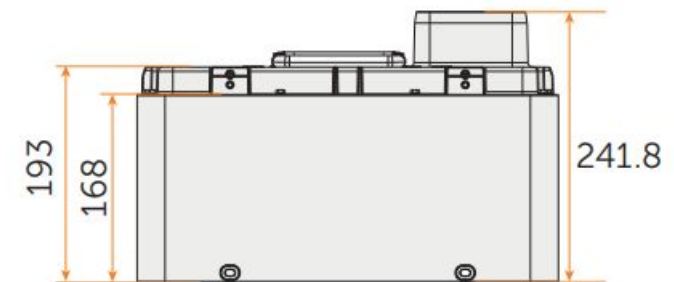
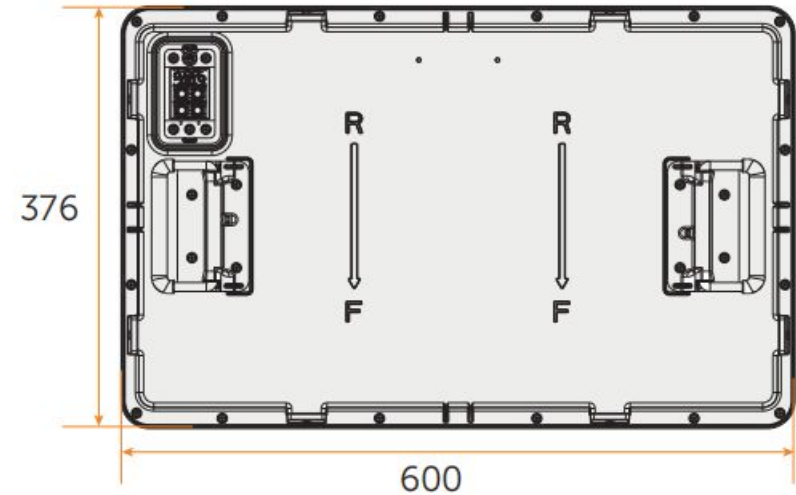
# BATTERY MODULE

## Sub Control

TBMS-S51-8

TB-HS51

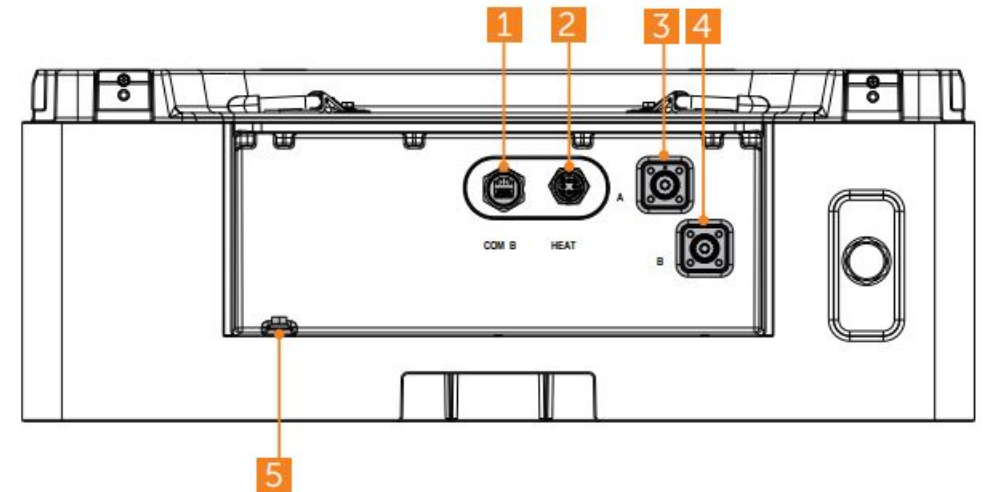
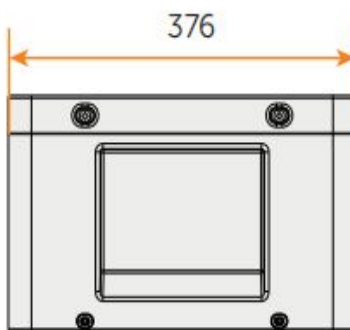
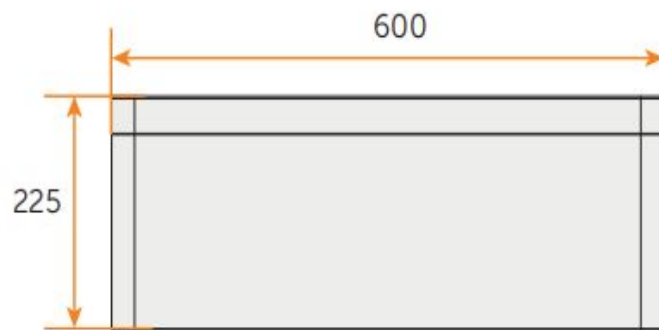
System Information		Product name
Product name		TB-HS51
Configuration	:	1P16S
Nominal Capacity	:	100 Ah
Nominal Voltage	:	51.2 V
Total Energy	:	5.12 kWh
Useable Energy	:	4.60 kWh
Max. Current	:	70 A
Weight	:	46 kg
Dimensions	:	600mm * 376mm * 168mm
Cooling Type	:	natural cooling



# SERIES BOX

## System Information

Product name	:	Series Box
Max. Current	:	70 A
Weight	:	15 kg
Dimensions	:	600mm * 376mm * 225mm

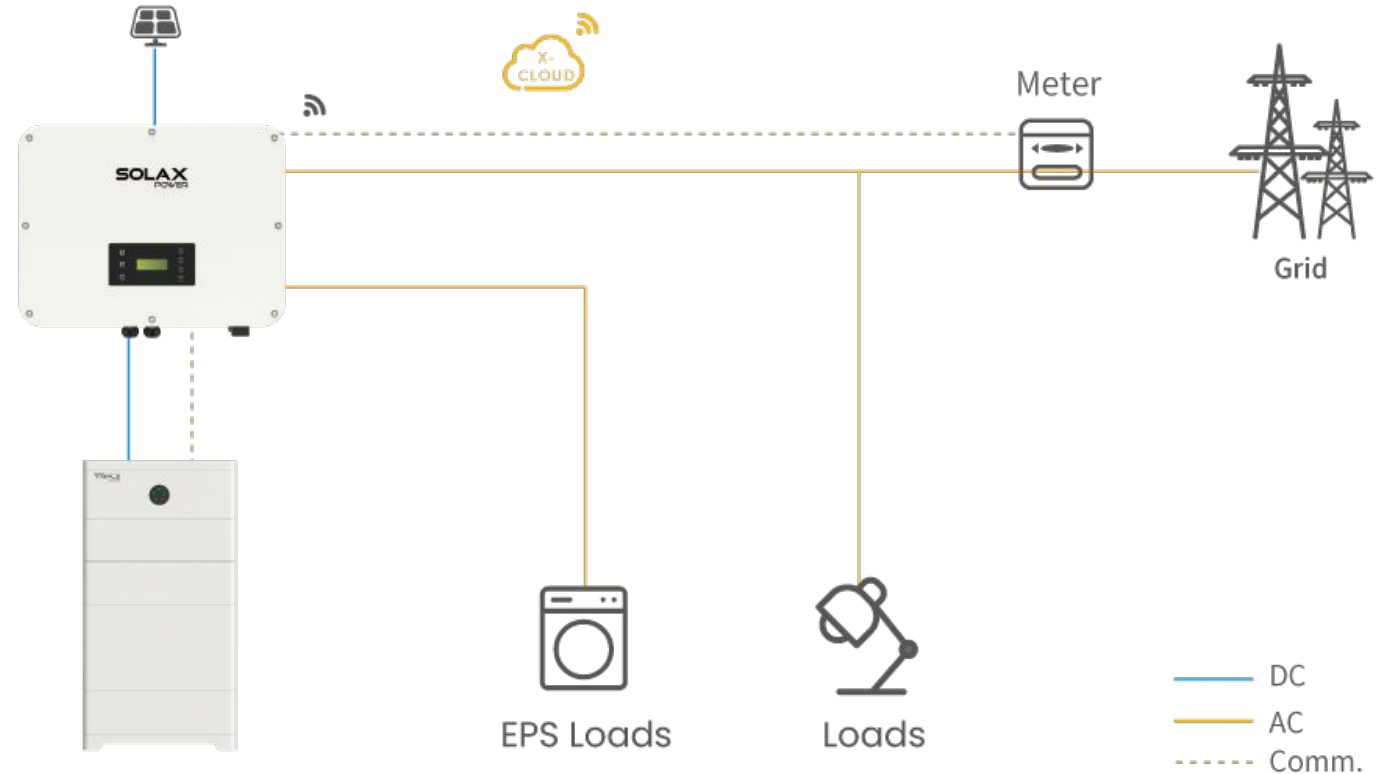


Rear view

# SOLUTION

## Typical System Diagram

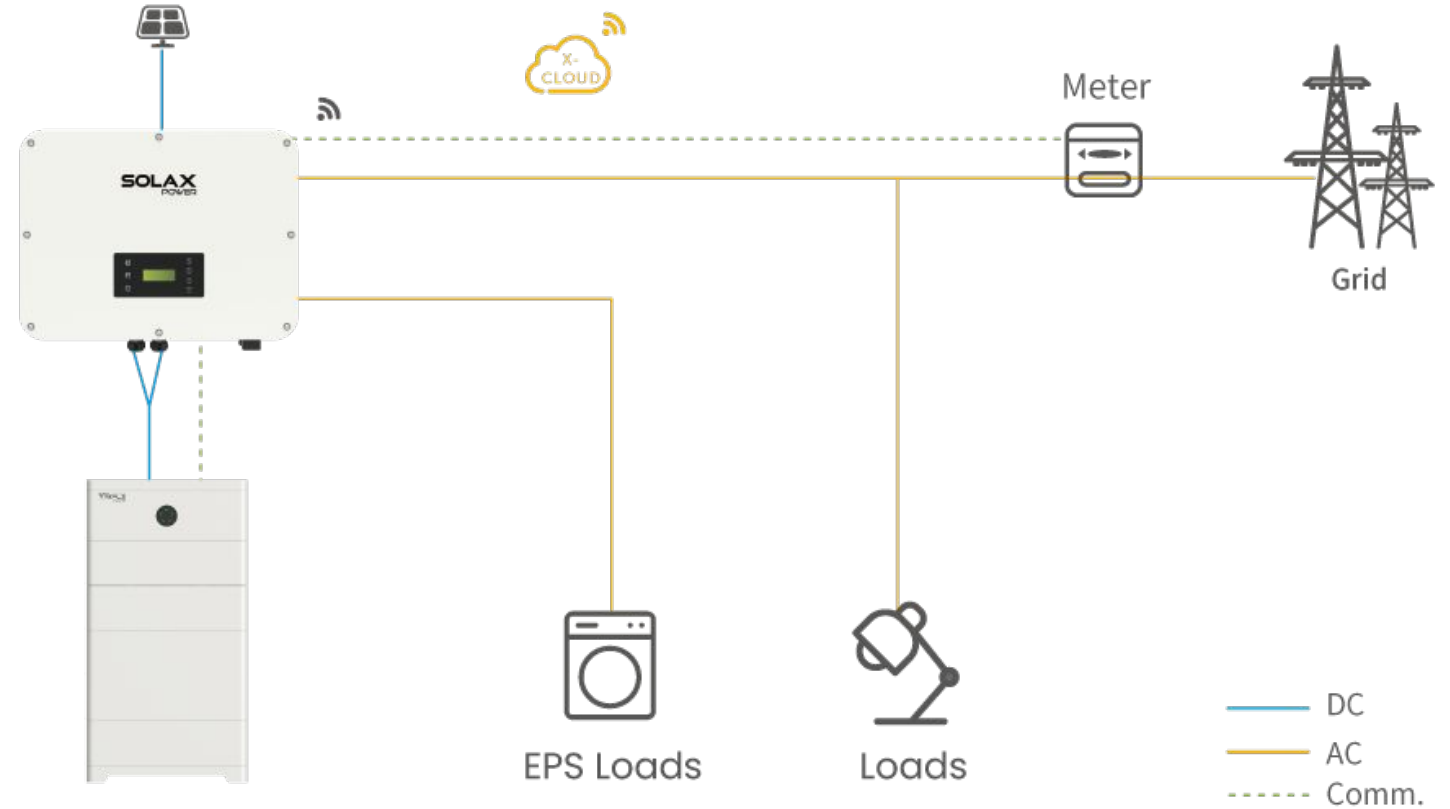
Support 2~8 battery models for single phase inverter, 3~13 battery models for three phase inverter



# SOLUTION

## Dual Ports in Parallel Connection

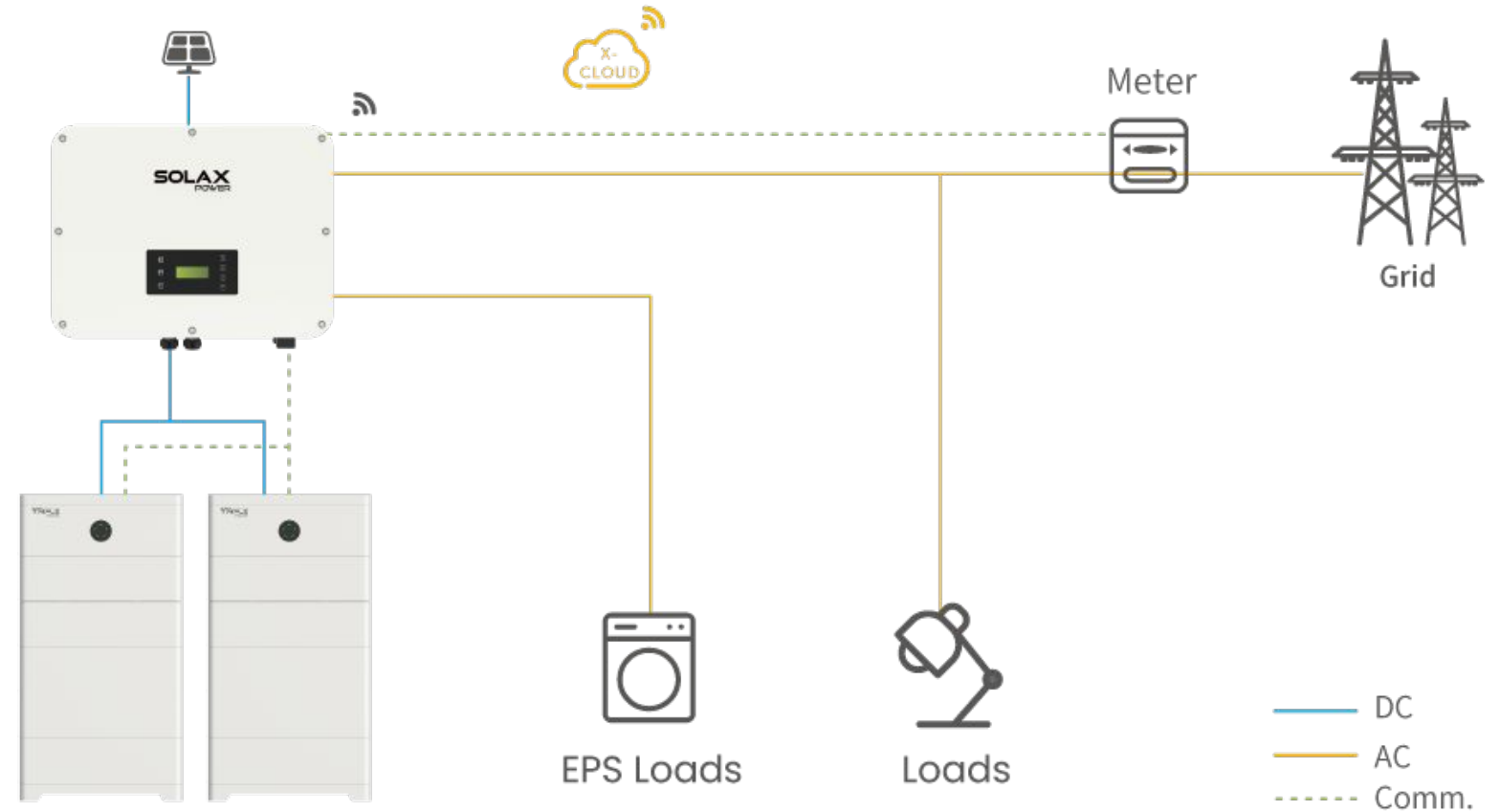
To increase the current capacity, a single string of batteries is connected to the two battery ports of the inverter by using a parallel cable.



# SOLUTION

## Single Port in Parallel Connection

To increase the battery capacity, two strings of batteries can be connected to one of battery ports of the inverter by using a parallel cable.



# SOLUTION

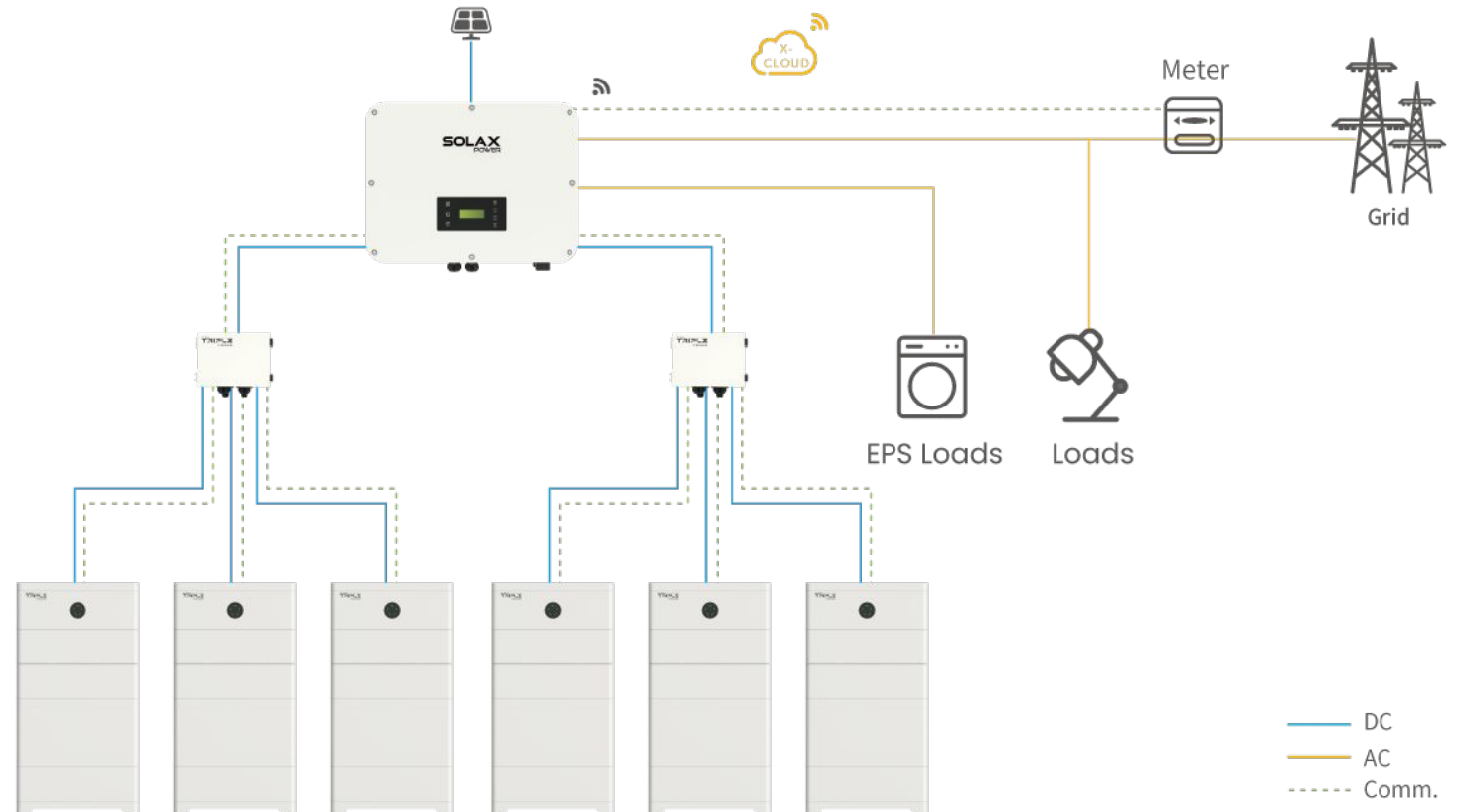
# N

## Parallel Capacity Expansion

Parallel expansion is used to increase the capacity of the battery system by connecting multiple batteries in parallel.

up to 6 battery groups can be paralleled, effectively allowing a setup of **78 (13 x 2 x 3)** modules with a TCBOX\* and the battery capacity can be expanded to **Max. 399kWh**

※When the number of parallel battery strings exceeds 2, a TCBOX must be used.



# RECOMMENDED

## X3-ULTRA

X3-ULTRA can support **3-13** battery modules per battery port, allowing for a maximum capacity of **399kWh** with parallel combiner box TCBox-70※

※TCBox-70 can support parallel connection of three battery groups



# RECOMMENDED

## X3-AELIO INVERTER

X3-AELIO can support **5-13** battery modules per battery port, allowing for a maximum capacity of **399kWh** with parallel combiner box TCBox-70※

※TCBox-70 can support parallel connection of three battery groups



# RECOMMENDED

## X3-G4 Pro

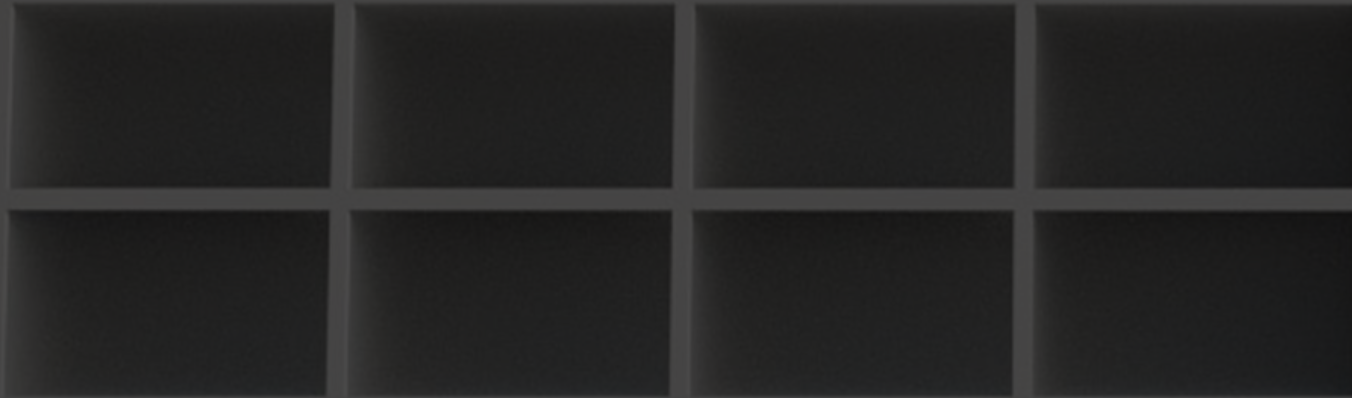
X3-G4 Pro can support **3-13** battery modules per battery port, allowing for a maximum capacity of **399kWh** with parallel combiner box TCBox-70※

## X1-VAST

X1-VAST can support **2-8** battery modules per battery port, allowing for a maximum capacity of **245.4kWh** with parallel combiner box TCBox-70※

※TCBox-70 can support parallel connection of three battery groups





# THANK YOU

[www.solaxpower.com](http://www.solaxpower.com) / [info@solaxpower.com](mailto:info@solaxpower.com)

